

AREA STATEMENT - SUB-DIVISION OF O.C.F. AS PER MODIFIED PROPOSAL

TOTAL AREA - 2987.74 SQM.

MULTIPURPOSE COMMUNITY HALL - 1986.78 SQM
 OLD AGE HOME - 1000.96 SQM

NOTE - AREA AND DIMENSIONS ARE AS PER SURVEY DT. 27.4.11

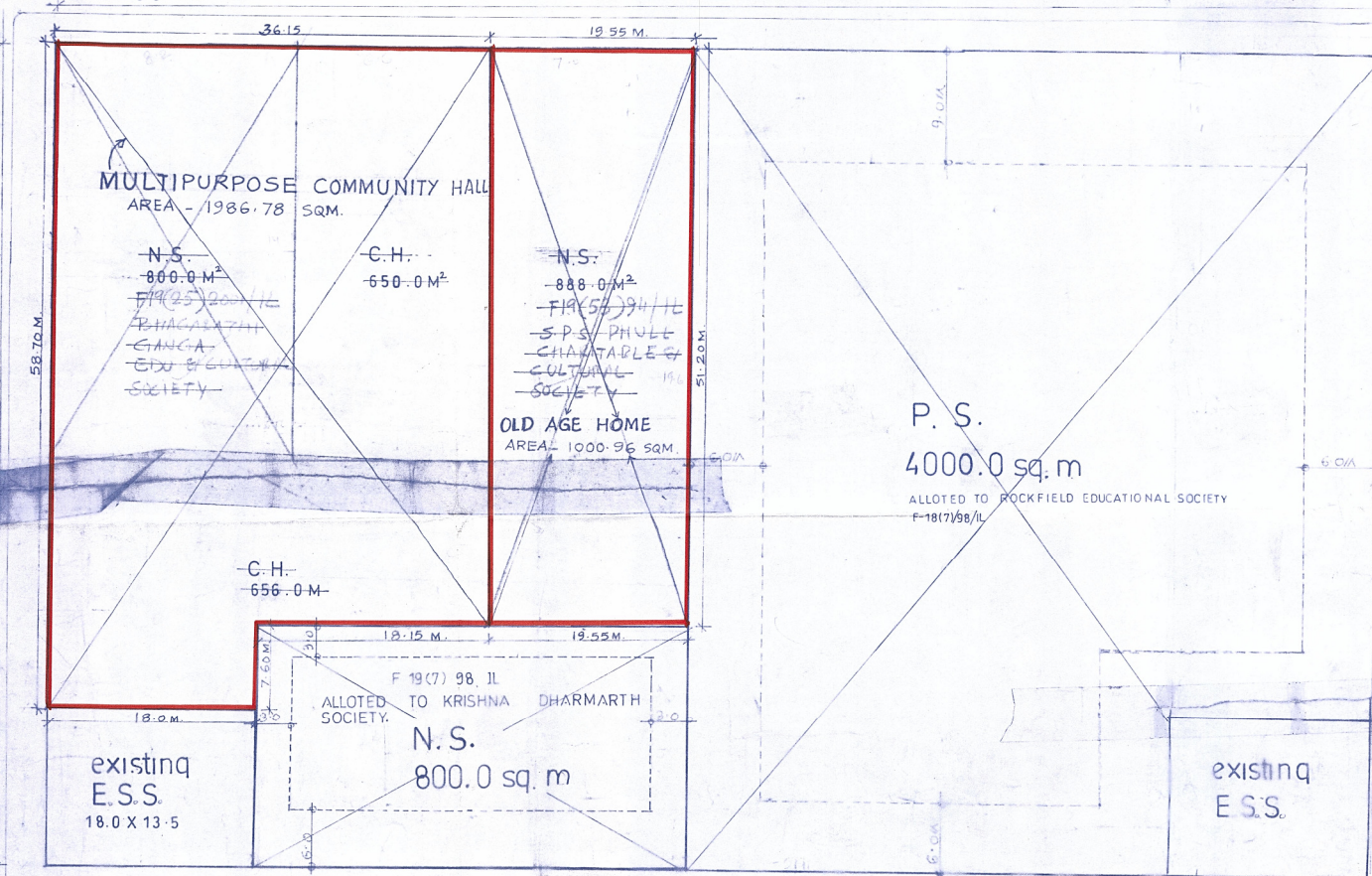


DELHI DEVELOPMENT AUTHORITY
ROHINI PROJECT PLANNING & DESIGN

road 18.0m r/w

road 18.0m r/w

road 13.5m r/w



P. S.
 4000.0 sq. m
 ALLOTED TO ROCKFIELD EDUCATIONAL SOCIETY
 F-18(17)/68/L

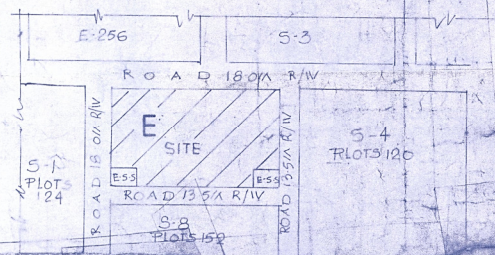
AREA STATEMENT

TOTAL AREA OF THE PLOT	8280.0 M ²
AREA UNDER P.S.	4000.0 M ²
AREA UNDER N.S.	800.0 M ²
AREA UNDER O.C.F.	2994.0 M ²
AREA UNDER E.S.S.	486.0 M ²

SUB-DIVISION OF O.C.F.

TOTAL AREA	2994.0 M ²
N.S.	800.0 M ²
C.H.	656.0 M ²
C.H.	656.0 M ²
N.S.	888.0 M ²

THE LAYOUT HAS BEEN APPROVED BY COMMR PLG VIDE FILE NO PPR.(1003) XVI 98 PART DATED 27.2.99.



key plan
 MODIFIED LAY OUT PLAN OF
 POCKET NS/PS BLOCK-E SEC-XVI

SCALE	
DATE	3.7.99
PLG DM/PLG ASST	
ASST. DIR	
JT. DIRECTOR (PLG)	sd/
DIRECTOR (PLG)	sd/

DELHI DEVELOPMENT AUTHORITY
 APPROVED BY
 302 & 203
 17/11/11 & 21/12/11
 98-201 & 107 (3) 201
 1003-16/98 PART II & 21/12/11
 98-201 & 107 (3) 201
 1003-16/98 PART II & 21/12/11
 98-201 & 107 (3) 201
 1003-16/98 PART II & 21/12/11

Pls. Auth. V. Subbarao Asst Dir (P/S) D. Div (P/S)

MODIFICATION IN MODIFIED LAYOUT PLAN IS MAINLY TO PROPOSE LARGER SIZE FOR MULTIPURPOSE COMMUNITY HALL AND OLD AGE HOME IN THE EARLIER APPROVED SCHEME WAS CONSIDERED AND APPROVED BY 302 & 203 SCREENING COMMITTEE MEETING HELD ON 17.11.11 VIDE ITEM NO. 98-201. THE MATTER WAS DISCUSSED IN 302 & 203 SCREENING COMMITTEE MEETING HELD ON 21.12.11 IN CONFIRMATION OF MINUTES VIDE ITEM NO. 107 (3) 201 AS BOTH THE LAND PLOTS ARE USING VACANT AND NOT ALLOTTED.

THE LAY-OUT HAS BEEN APPROVED BY COMMR PLG VIDE FILE NO PPR.(1003) XVI 98 PART II & 21/12/11

DELHI DEVELOPMENT AUTHORITY
 HUPW-COORDINATION UNIT
 APPROVED BY
 302 & 203
 17/11/11 & 21/12/11
 98-201 & 107 (3) 201
 1003-16/98 PART II & 21/12/11
 98-201 & 107 (3) 201
 1003-16/98 PART II & 21/12/11
 98-201 & 107 (3) 201
 1003-16/98 PART II & 21/12/11



ROHINI
 PROJECT OFFICE - NEW DELHI 110088

MODIFIED LAY OUT PLAN

16/01/12
 Dy. Director (Arch.) Coord