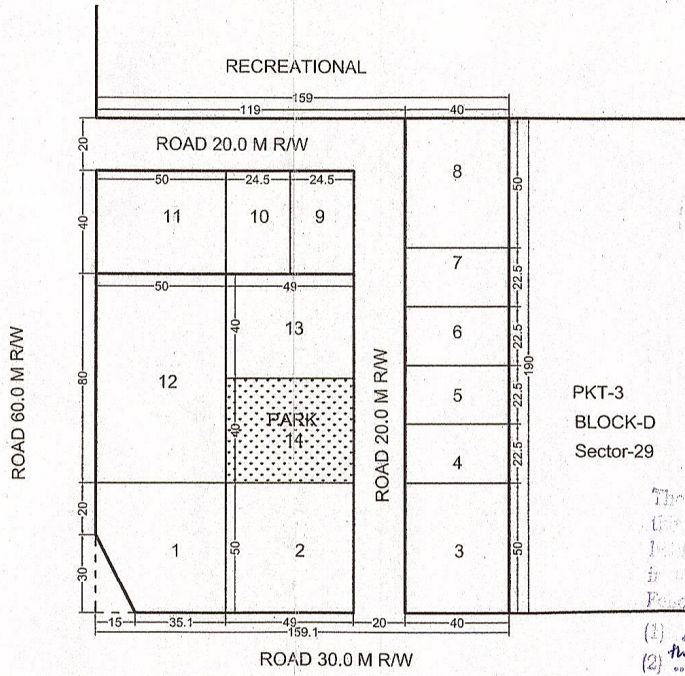
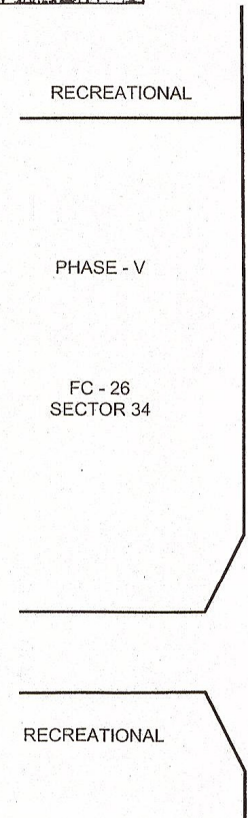


KEY-PLAN



The Proposal has been approved by the 304th Screening Committee Meeting Dt. 27-02-2012 vide item No. 02 of 2012 in file No. Dir (PLG) R/4029/Facilities/2011 with the following Observations:

- (1) Adequate buffer is enclosed between the public & semi public plot & recreational plots.
- (2) Recreational plots.

DELHI DEVELOPMENT AUTHORITY
VERIFIED
 This proposal was considered in the 304th Screening Committee Meeting held on 27.2.12 vide item No. 02 of 2012
 Director (Arch.) Coord

CERTIFIED AUTHORITY
 Approved in 304th Screening Committee Meeting Dt. 27-02-2012 vide item No. 02 of 2012
 All observations (as per 1) and (2) in drawings are in incorporated.
 Sign: Vinod Sakle 02/04/2012
 Name: VINOD SAKLE
 Designation: DIRECTOR (PLG) Rohini M.B.D.
 Plg. Asstt. - Asstt. Dir. Dy. Dir.

DELHI DEVELOPMENT AUTHORITY
 ROHINI PROJECT PLANNING & DESIGN

AREA STATEMENT
 TOTAL AREA OF POCKET 3.021 HA
 DETAILS OF PLOTS:

PLOT NO.	USE	AREA (IN HA)
1	PSP	0.227
2	MATERNITY HOME	0.245
3	NURSING HOME/POLY CLINIC	0.200
4-7	(4 PLOTS) PSP, 900 SQ. M. EACH	0.360
8	PSP	0.200
9-10	(2 PLOTS) PSP, 980 SQ. M. EACH	0.196
11	COMMUNITY RECREATIONAL CLUB	0.200
12	HOSPITAL 'D'	0.400
13	SCHOOL FOR MENTALLY CHALLENGED	0.196
14	PARK	0.196
	CIRCULATION	0.601

NOTES:
 i) THIS PLAN IS PREPARED BASED ON TOTAL STATION SURVEY OF POKET FC-14 PROVIDED BY EXECUTIVE ENGINEER, RPD-2, DDA VIDE LETTER No. F50 (62) AE(P) / RPD 2 /DDA/601 DATED 12.05.2011 AND SUBSEQUENTLY VIDE LETTER No. F50 (62) AE(P) / RPD 2 /DDA/1314 DATED 09.2011.
 ii) SERVICES ARE TO BE PROVIDED IN PARK.
 iii) DEVELOPMENT CONTROL NORMS AS PER MASTER PLAN FOR DELHI - 2021

THE PROPOSAL HAS BEEN CONSIDERED AND APPROVED BY 304th SCREENING COMMITTEE MEETING HELD ON 27-02-2012 VIDE ITEM NO. 02 OF 2012 WITH THE CONDITION THAT-
 (IN THE FACILITY POKET-13, SECTOR-29 ADEQUATE BUFFER IS ENCLOSED BETWEEN THE PUBLIC AND SEMI PUBLIC PLOT AND RESIDENTIAL PLOTS.)

FILE No: DIR (PLG) R/ 4029 / FACILITIES / 2011

PROPOSED LAYOUT PLAN FOR PUBLIC & SEMI PUBLIC POKET (FC-13) AT SECTOR 29, PHASE IV, ROHINI

SCALE 1 : 2000
 DATE JANUARY 2012
 PLG. ASSTT. / PLG. OFFICER
 ASSTT. DIR. (PLG)
 DY. DIR. (PLG)
 DIRECTOR (PLG)

ROHINI
 PROJECT OFFICE NEW DELHI 110085
 DRG. NO. : FC-14/29/PH-IV

AREA STATEMENT
TOTAL AREA OF POKET 7.56 HA

DETAILS OF PLOTS:

PLOT NO.	USE	AREA (IN HA)
1	SPACE FOR PARKING OF BUSES, LMVS, ITPS ETC.	0.53
2	NURSING HOME/POLY CLINIC	0.10
3	MATERNITY HOME	0.10
4-6	(3 PLOTS) PSP, 1000 SQ. M. EACH	0.30
7	SOCIO CULTURAL ACTIVITY	0.10
8	SCHOOL FOR PHYSICALLY CHALLENGED	0.18
9	COMMUNITY RECREATIONAL CLUB	0.20
10	MULTI PURPOSE COMMUNITY HALL	0.20
11-12	(2 PLOTS) PSP 2000 SQ.M. EACH	0.40
13	HOSPITAL 'C'	0.81
14	ESS (66 KV)	0.86
15	PSP (FOR NATIONAL INSTITUTE FOR DISASTER MANAGEMENT)	2.87
16	PARK	0.18
	CIRCULATION	0.73

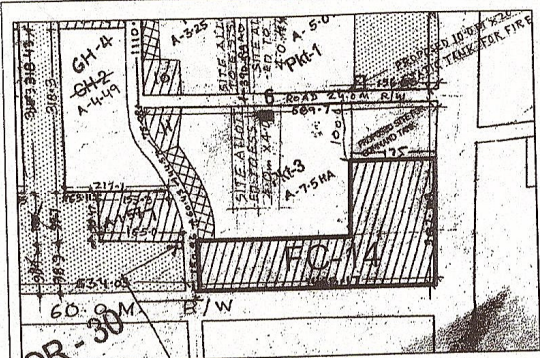
NOTES:
i) THIS PLAN IS PREPARED BASED ON TOTAL STATION SURVEY OF POKET FC-14 PROVIDED BY EXECUTIVE ENGINEER, RPD-2, DDA VIDE LETTER No. F50 (62) AE(P) RPD 2 /DDA/801 DATED 12.05.2011 AND SUBSEQUENTLY VIDE LETTER No. F50 (62) AE(P) / RPD 2 /DDA/131 DATED 17.09.2011.
ii) SERVICES ARE TO BE PROVIDED IN PARK.
iii) DEVELOPMENT CONTROL NORMS AS PER MASTER PLAN FOR DELHI - 2021

THE PROPOSAL HAS BEEN CONSIDERED AND APPROVED BY 304TH SCREENING COMMITTEE MEETING HELD ON 27-02-2012 VIDE ITEM NO. 02: 2012 WITH THE CONDITION THAT - (IN THE FACILITY POKET-14, SECTOR-29 ADEQUATE BUFFER IS ENCLOSED BETWEEN THE PUBLIC AND SEMI PUBLIC PLOT AND RESIDENTIAL PLOTS.)

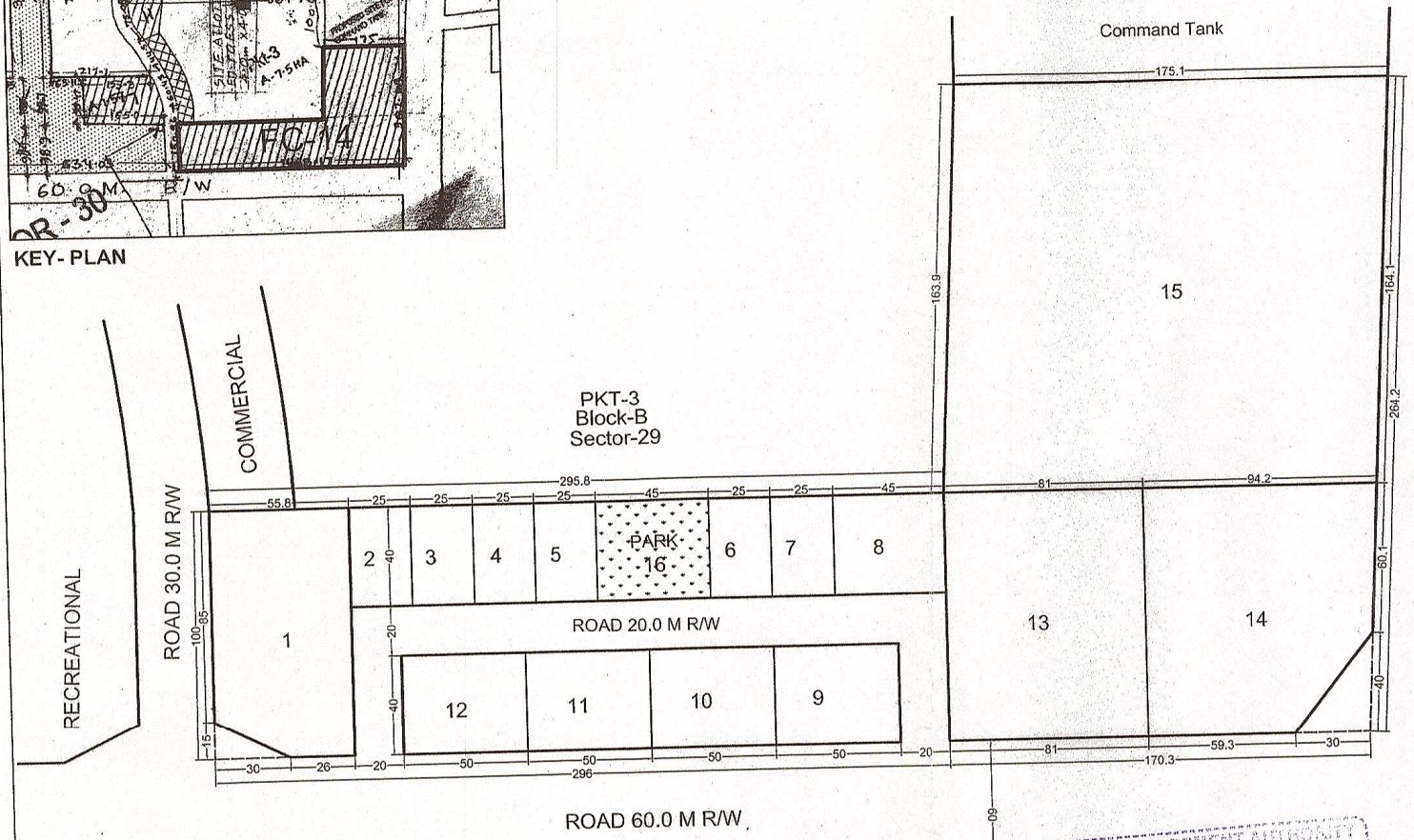
(FILE No.: DIR (PLG) R / 4029 / FACILITIES / 2011)

PROPOSED LAYOUT PLAN FOR PUBLIC & SEMI PUBLIC POKET (FC-14) AT SECTOR 29, PHASE IV, ROHINI

SCALE	1 : 2000
DATE	JANUARY 2012
PLG. ASSTT. / PLG. OFFICER	<i>Sm</i>
ASSTT. DIR. (PLG)	<i>hsc</i>
DY. DIR. (PLG)	
DIRECTOR (PLG)	



KEY-PLAN



ROAD 80.0 M R/W

FC-3
Sector-28

The Proposal has been approved by the 304th Screening Committee held on 27-2-12 vide item No. 02: 2012 in File No. DIR (PLG) R / 4029 / Facilities / 2011 with the following Observations:
 (1) Adequate buffer is enclosed between the public & semi public plot & Residential plots

DELHI DEVELOPMENT AUTHORITY
FC-15, Sector-30
Approved in 304th Screening Committee Meeting Dt. 27-2-2012 vide Item No. 02: 2012. All observations (nos. 1) applicable to drawings are incorporated.
 Sign: *V. V. D. Sarla*
 Name: V. V. D. SARLA
 Designation: DIRECTOR (PLG) Rohini Man
 Plg. Asstt. *hsc* ASSTT. DIR *Sm* Dy. Dir.

DELHI DEVELOPMENT AUTHORITY
HUPW CO-ORDINATION UNIT
VERIFIED
This proposal was considered in the 304th Screening Committee Meeting held on 27.2.12 vide item no. 02: 2012.
27/01/2012
 Director (Arch.) Coord

RECREATIONAL

ROAD 30.0 M R/W

COMMERCIAL

PKT-3
Block-B
Sector-29

ROAD 20.0 M R/W

ROAD 60.0 M R/W

Command Tank

15

13

14

PARK
16

1

2

3

4

5

6

7

8

12

11

10

9