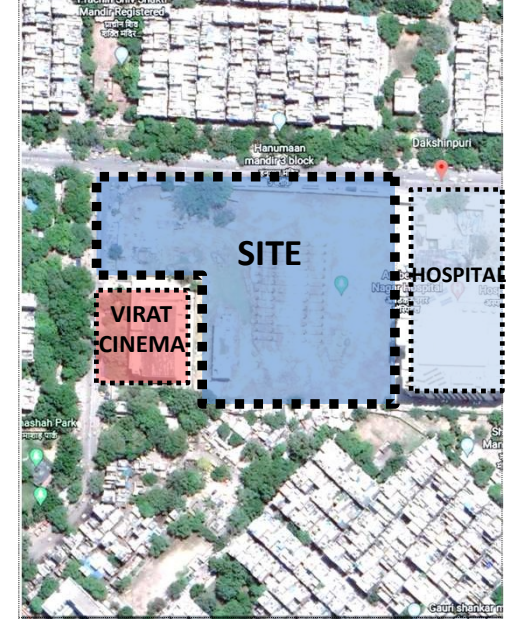


# DDA UTSAV STHAL, DAKSHINPURI

## LOCATION

- Site for **DDA Utsav Sthal** (Temporary) is located in Community Centre, **Dakshinpuri**.
- The site is bound by a 24m R/W road along the North side and on South East side there is a Hospital adjoining it.
- Virat Cinema is towards the West side.
- Site is approachable by two roads.

Description	Proposal
<b>Site Area</b>	19600.0 sqmt
<b>Setback</b>	As per Layout
<b>Ground Coverage</b>	2400 sqmt Pandal Structure Utility Block , Toilet Block , Store and Guard Room apprx 1500 sqmt
<b>Built up Area</b>	4945 – 6259 sqmt 30 – 35% Soft Parking(215 – 272 ECS)
<b>Status</b>	Project has been awarded on Design and build basis by Engineering Wing.  Civil work has been completed.



RESIDENTIAL AREA  
DAKSHIN PURI

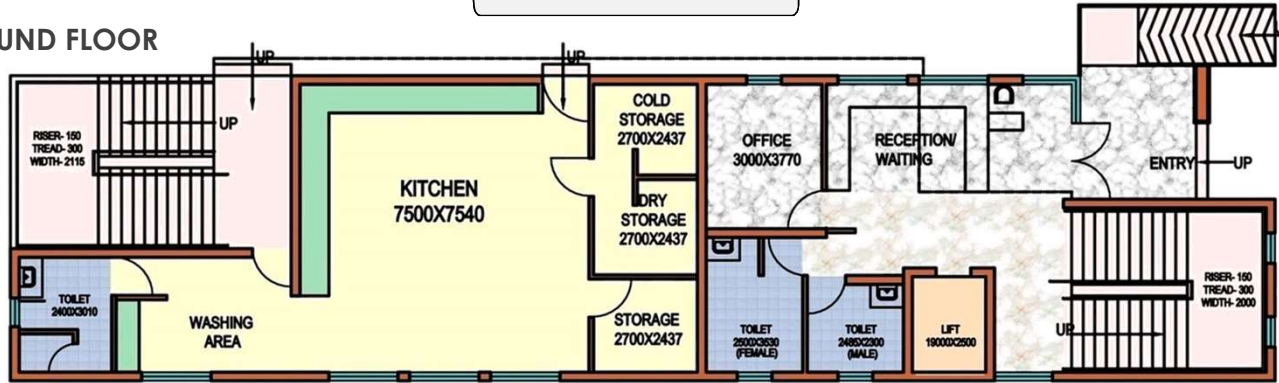




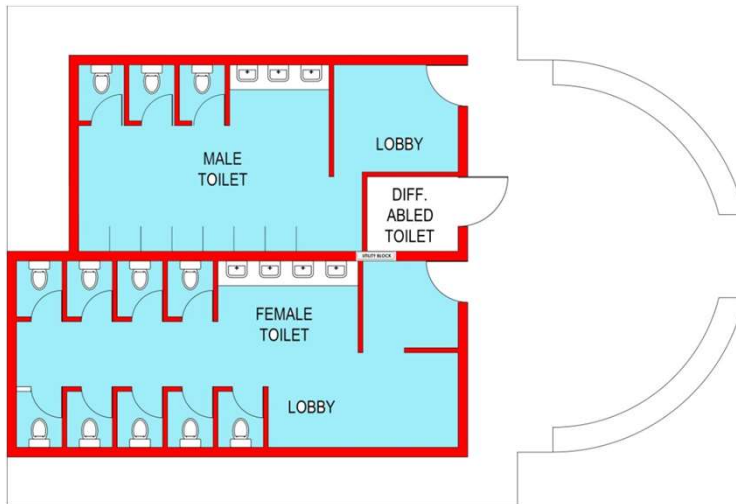
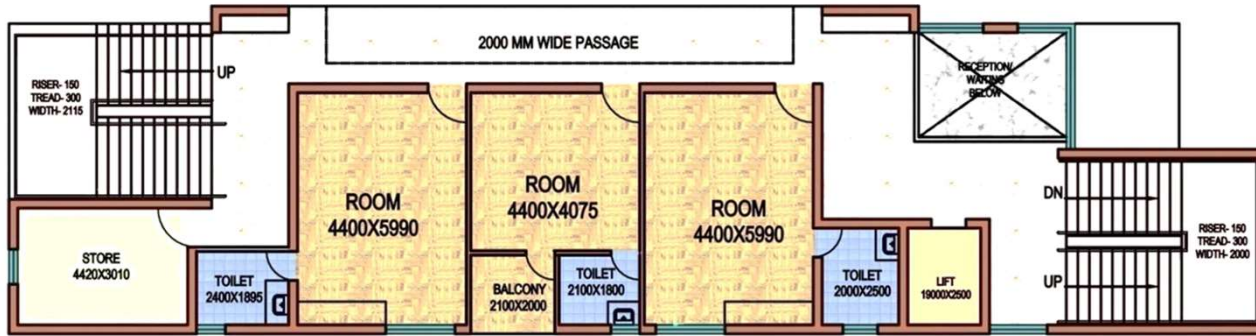
# DDA UTSAV STHAL, DAKSHINPURI

## UTILITY BLOCK

### GROUND FLOOR



### FIRST FLOOR



## TOILET BLOCK

