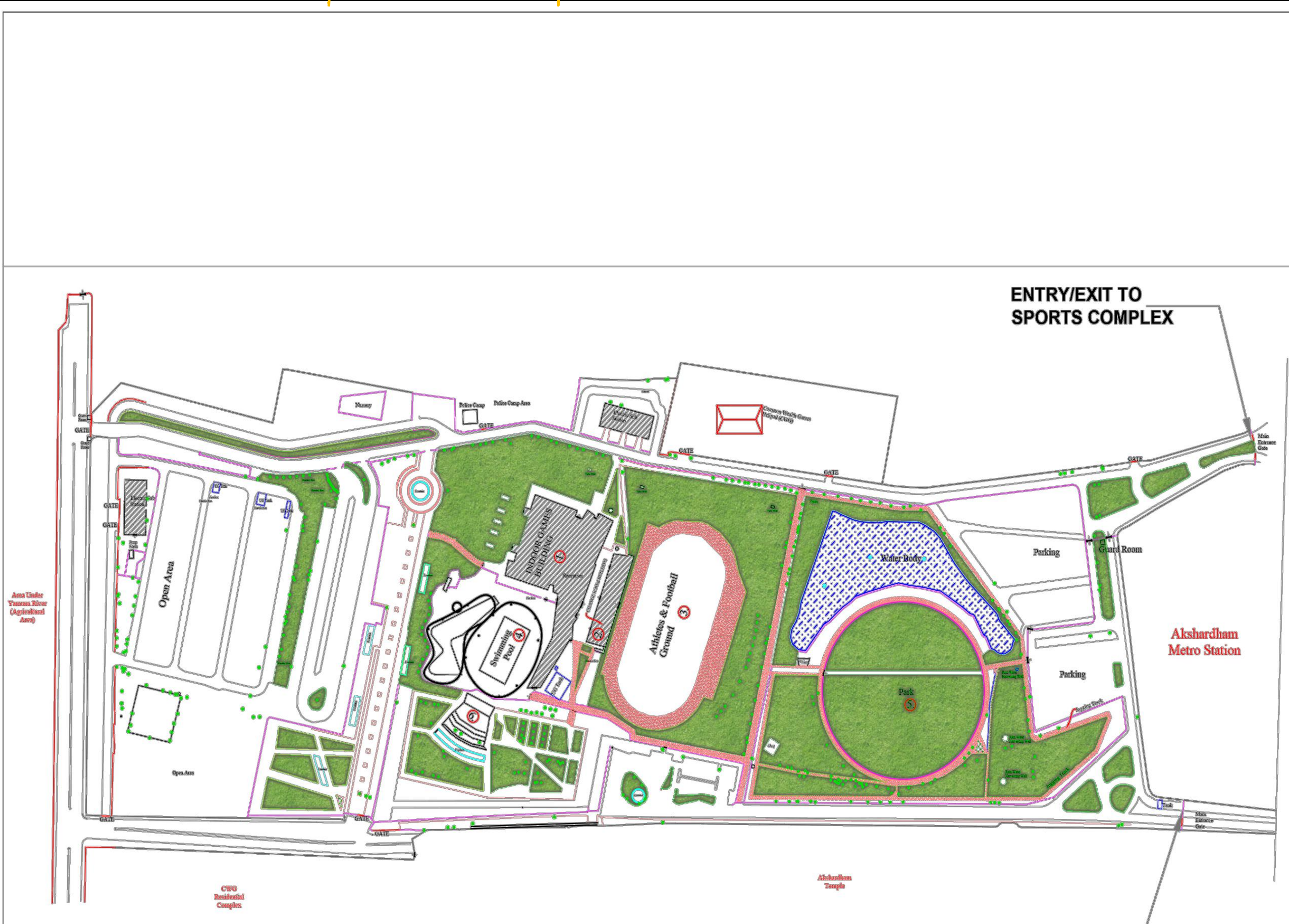
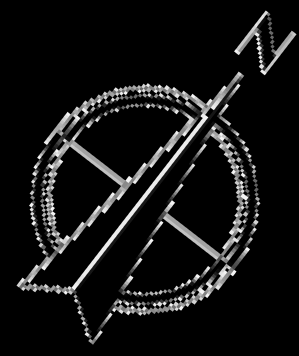


# Common Wealth Sports Complex



# DDA

## LEGEND OF INDOOR PLAY FACILITY

S.No	BUILDINGS
1.	INDOOR GAMES BUILDING
2.	CHANGE ROOM BUILDING

## LEGEND OF OUTDOOR PLAY FACILITY

S.No	OUTDOOR PLAY FACILITIES
3.	ATHELETES AND FOOTBALL GROUND
4.	SWIMMING POOL / TODDLER POOL
5.	PARK
6.	OPEN AIR THEATRE

**SITE AREA 8.5 HAC**

**NOTE:**  
This layout plan has been developed on the basis of Total Station Survey

**PROJECT TITLE :-**  
**CWGV SPORTS COMPLEX (EXISTING)**

<b>DRG. TITLE</b> LAYOUT PLAN		<b>DRG. ISSUED FOR</b> WEBSITE UPLOAD	
<b>SCALE :</b> NTS	<b>DATED :</b> 29-06-2022		
 ARCH. ASSTT	 ASSTT. DIR (ARCH)	 DEPUTY DIRECTOR (ARCH)	
	<b>SR. ARCHITECT</b>	<b>ADDL. CH. ARCHITECT</b>	<b>CH. ARCHITECT</b>
OFFICE OF THE SENIOR ARCHITECT (SPORTS) SPORTS UNIT (HUPW), ARCHITECTURE WING, DDA, 8th FLOOR, VIKAS MINAR, ITO, NEW DELHI			

SPORTS

